

How to Create Your LinkedIn Learning Account

1 Open a new Incognito Window in Google Chrome

- Open Google Chrome
- Click on the 3 dots on the top right-hand corner and select New Incognito Window



2 Set Up MFA

- On your computer, go to www.office.com and login using your SETU staff username and password e.g. firstname.lastname@setu.ie
- You will see a More information required screen. Choose Next
- On your phone, go to the iOS app store (iPhone) or Google Play store (android) and search for Microsoft Authenticator app. Then install the app. Follow the steps to complete the setup of the app.

3 Login with the following link <https://www.linkedin.com/learning-login/>

- Sign in using your SETU credentials (@setu.ie email and usual password).

Sign In

Sign in using the same email address you use for
LinkedIn.com or your organization email

Email
corina.power@setu.ie

Continue

[Sign in with your library card](#)




New to LinkedIn? [Join now](#)

- Choose the **@setu.ie** account regardless of the recommendation notice.

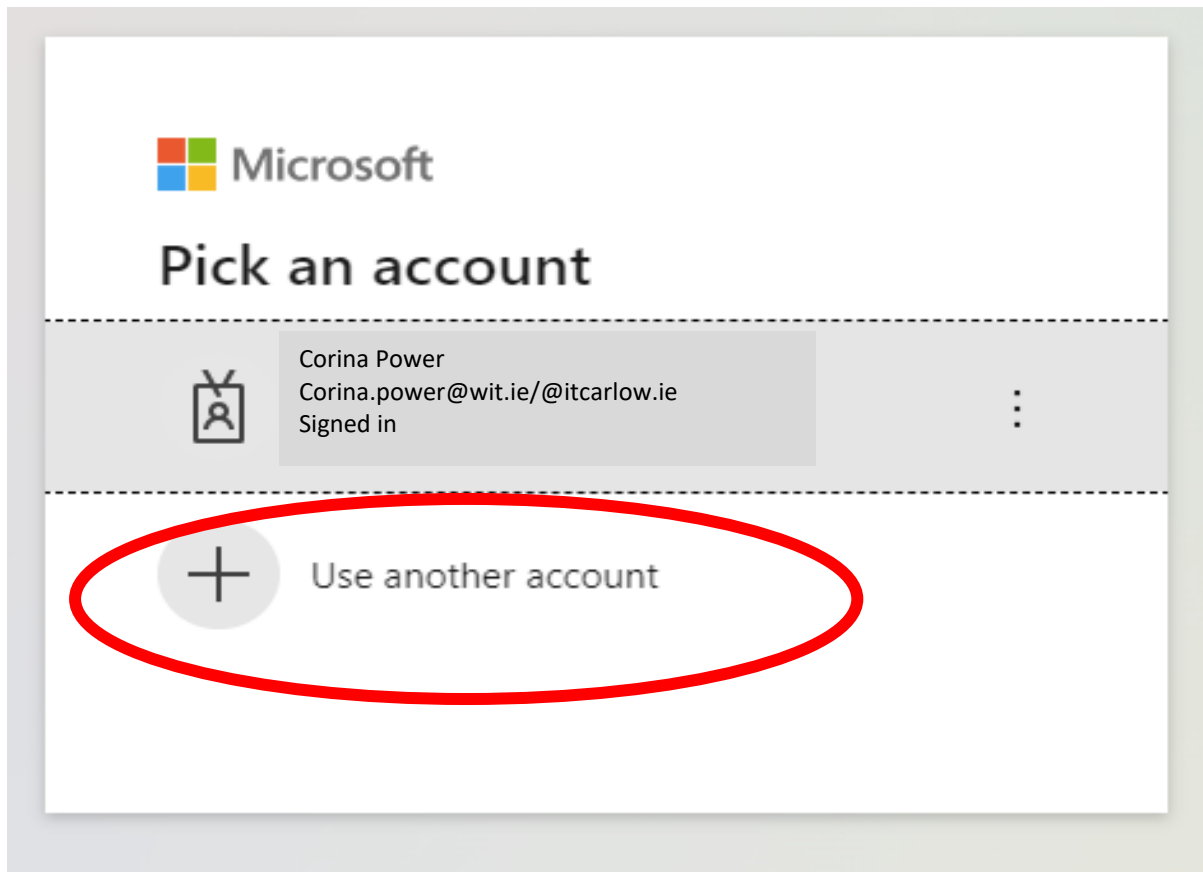
Welcome

corina.power@setu.ie [Change](#)

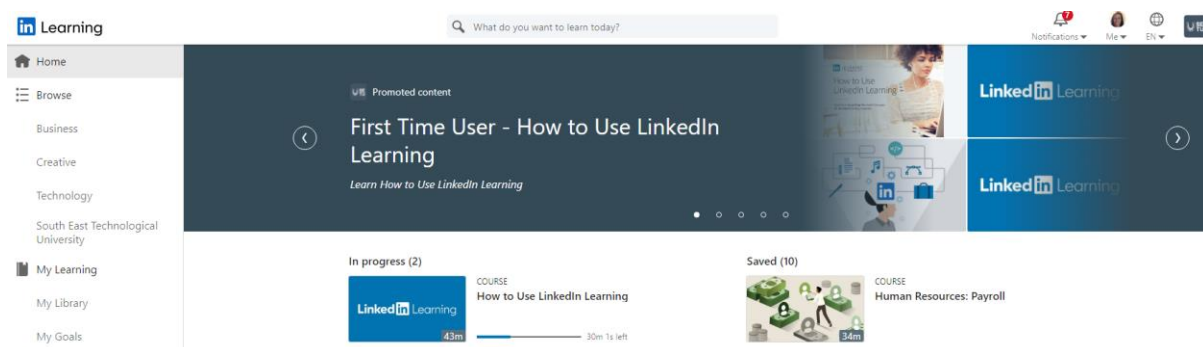
Choose an account

	South East Technological University @WIT.ie  Recommended for South East Technological University	→
	South East Technological University @SETU.ie	→

- Choose your **@setu.ie** account again. If it is not available in the drop-down list as below, choose 'use another account' and proceed to re-enter your SETU credentials (@setu.ie email and usual password).



- You can choose to connect to your LinkedIn account if you wish or skip this step and you will then be brought to your dashboard.



You are ready to begin your LinkedIn Learning journey!

If you have any technical issues logging in, please email ntutorr@setu.ie.