



Ollscoil
Teicneolaíochta
an Oirtheisirt
South East
Technological
University



How to Create Your LinkedIn Learning Account

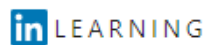
1 Open a new Incognito Window in Google Chrome

- Open Google Chrome
- Click on the 3 dots on the top right-hand corner and select New Incognito Window



2 Login with the following link <https://www.linkedin.com/learning-login/>

- Sign in using your SETU credentials (@setu.ie email and usual password).



Sign In

Sign in using the same email address you use for
LinkedIn.com or your organization email

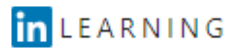
Email
corina.power@setu.ie

Continue

[Sign in with your library card](#)

New to LinkedIn? [Join now](#)

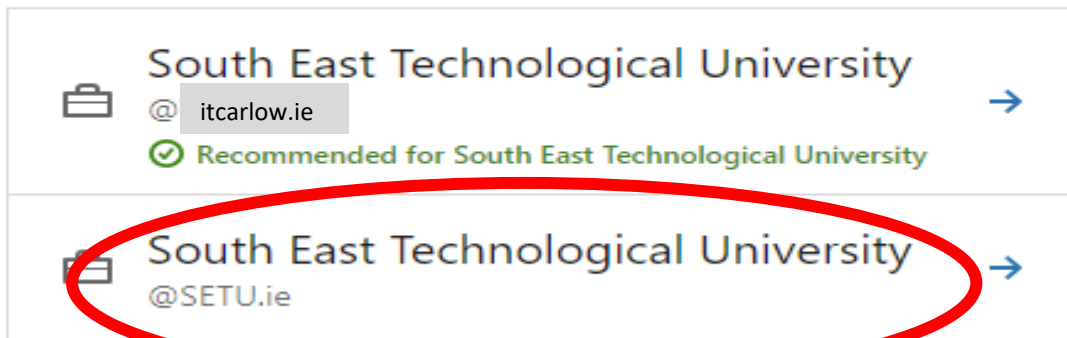
- Choose the **@setu.ie** account regardless of the recommendation notice.








Welcome

corina.power@setu.ie [Change](#)

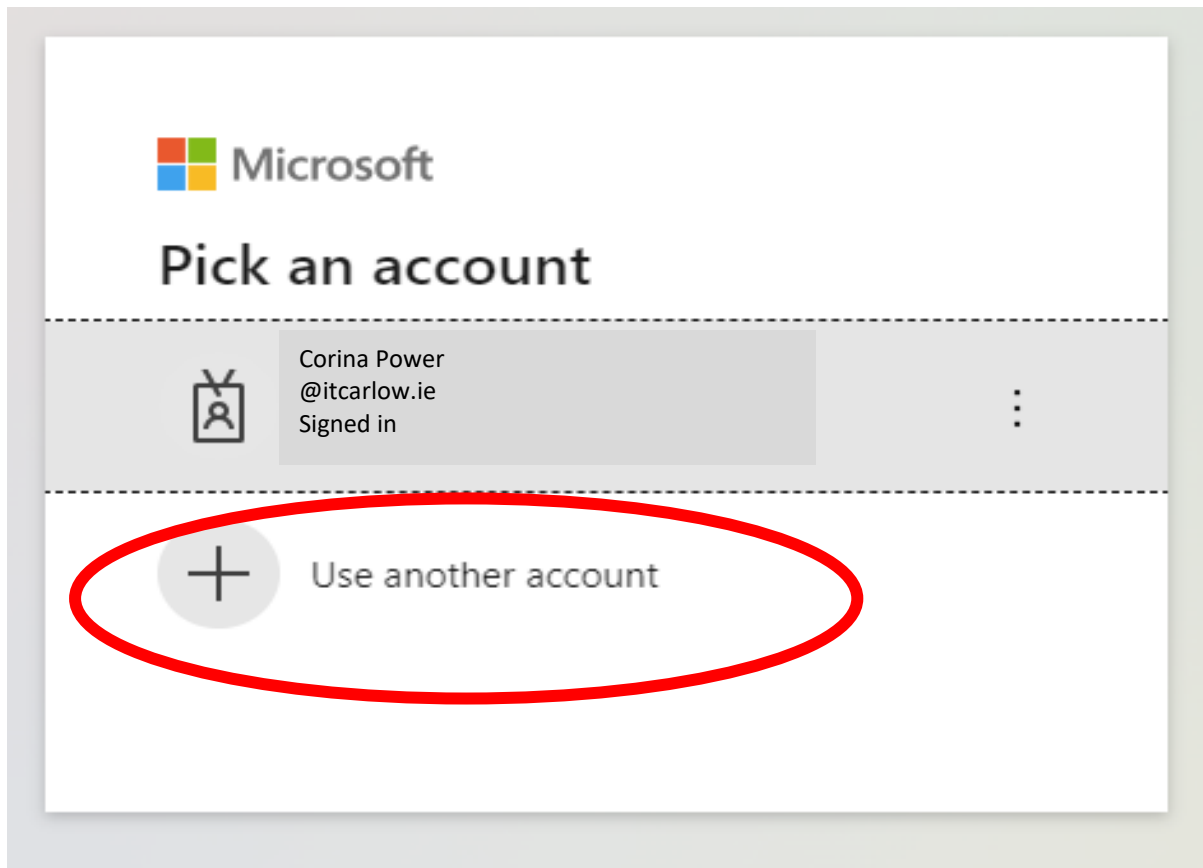
Choose an account



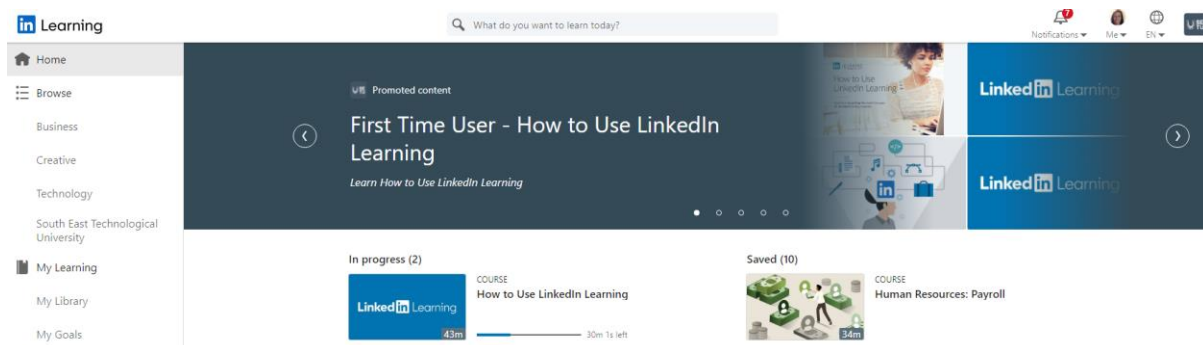
A screenshot of a LinkedIn account selection dropdown menu. It contains two items, each with a briefcase icon, the name 'South East Technological University', and a right-pointing arrow. The first item shows the email '@itcarlow.ie' in a grey box, a green checkmark icon, and the text 'Recommended for South East Technological University'. The second item shows the email '@SETU.ie'. A red oval highlights the second item.

	South East Technological University @itcarlow.ie  Recommended for South East Technological University	
	South East Technological University @SETU.ie	

- Choose your **@setu.ie** account again. If it is not available in the drop-down list as below, choose 'use another account' and proceed to re-enter your SETU credentials (**@setu.ie** email and usual password).



- You can choose to connect to your LinkedIn account if you wish or skip this step and you will then be brought to your dashboard.



You are ready to begin your LinkedIn Learning journey!

If you have any technical issues logging in, please email ntutorr@setu.ie.